



CRUZIANA

GEOPARK NATURTEJO DA MESETA MERIDIONAL-EUROPEAN AND GLOBAL GEOPARK - MONTHLY REPORT

In this issue: – “The time we went for ore” in Proença-a-Velha annual Festival – Portugal O'Meeting 2013: the world for sport in Idanha-a-Nova – Action for the school project “Rivers” - Naturtejo Geopark and partners in the BTL Tourism Trade Show at Lisbon...and more!



Olá/Hola/Ciao/Bonjour/Γειά σου/Hallo/God Dag/Salut/Zdravo/Hello/Ahoj/Helo/Helló/ Hei

Geo-stories of our places and people: Salgueiro do Campo

Salgueiro do Campo spreads over the Penha hill looking to the fertile and plane olive grove and vegetable gardens 100m below. Located in the quartzite alignment that stretches between S. Martinho and Castelo Branco, towards the S. Brás, Raposa and Pedragueira hills that are disconnected from each other by ancient fault movement, which contributed 300 million years later to the local soil fertility. The same faults allowed the transposition of this range of hills by the Tripeiro river, an oasis of biodiversity between the granitic slopes and the poor, shale moorland. The area of Salgueiro do Campo civil parish occupies 30, 41km² of the Castelo Branco municipality and the village hosts 891 inhabitants. The quartzite rocks laid down in much fractured layers by the proximity of the left displaced shear faulting, present numerous springs of excellent water, one being in the settlement origin, more than 831 years ago. As the story tells, it was in the Cold Spring, next to a great willow bark that the mule drivers in transit stopped by to replenish themselves with the precious liquid and gather renewed strengths. Connected with this same faulting there was in the past the lead exploration in Queirozes, next to Palvarinho. The company Galena do Ocreza explored these mines from 1942 to the late 50's, in an intermittent way.

Of the oldest settlement, few are the traces that the present hasn't erased yet. It is worth to walk across the Rossio Street to appreciate some of the aspects of the 17th century architecture. From the rope manufacturer centre of the Beira Baixa has left only the fertile soils and some products worth to highlight such as the bread, the olive oil or the wine. Salgueiro do Campo once had 203ha of vineyards, producing some quality wine avowed in the region. The Wine Tasting Fair, in November, seeks to foster a family production which, through the formation of a local winemakers cooperative, could elevate the Salgueiro do Campo wine to a new level of marketing and income generation. Another product of recognized quality is the Salgueiro do Campo bread. Since 1989 that the Salgueiro Bakery bakes bread and traditional cakes and distributes them widely through the region. Recently, due to the gourmet product market and the necessity of innovation and business cooperation, Salgueiro Bakery joined other regional enterprises in the Naturtejo Geopark area to commercialize the "Salgueirinhos" with a new cloaking, which associates complementary products, such as regional cakes and teas of organic production. Local products such as these, the olive oil or the Palvarinho Cheese could be commercialized in the local trade, but there are also an increasing number of quality product stores emerging in the region



Olá/Hola/Ciao/Bonjour/Γειά σου/Hallo/God Dag/Salut/Zdravo/Hello/Ahoj/Helo/Helló/ Hei

The agro-tourism has potential in Salgueiro do Campo, with the visitor participation in the annual agricultural cycle. The Tripeiro river watermills, as well as its banks of biodiversity, can be the pivoting point to a pedestrian trail starting in the new Public Garden, near the entrance of Salgueiro do Campo.

Recommended Bibliography:

Agostinho, R. 1982. Subsídios para uma monografia de Salgueiro do Campo. Centro Cultural e Recreativo de Salgueiro do Campo.

Agostinho, R. 2003. Salgueiro do Campo – Aspectos da sua terra, da sua história e das suas gentes. Cadernos de Património Cultural da Beira Baixa, Câmara Municipal de Castelo Branco.

www.salgueirodocampo.planetaclix.pt

The Editor
Carlos Neto de Carvalho
Scientific Coordinator
Geologist

Front Cover: Nuno Dias (Objectiva: Geopark Project, www.naturtejo.com/objectiva)

ACTIVITIES OF THE MONTH



February and March - Ensino Magazine and Naturtejo Geopark participate in Futurália and Qualific@ education fairs. The partnership for mutual promotion of Ensino Magazine newspaper and Naturtejo Geopark in the major education and job fairs in Portugal is still on. Every year Ensino Magazine is represented in both fairs with a booth and raffles weekends among visitors (professors, students and people looking for job opportunities) to visit the Geopark.

2nd February - "21st century Rural Museum" in Coimbra. The ethnographic exhibition about rural Idanha-a-Nova is an initiative from the Manchester Institute together with the Municipality of Idanha-a-Nova with the support of Naturtejo Geopark and the British Council. This travelling exhibition on rural culture and desertification is now at Coimbra "Círculo de Artes Plásticas".



6th February - Evolution of Landscape in Penha Garcia for future Landscape Architects. The field class was prepared by Manuela Catana for 3 students and 1 professor from Manchester Metropolitan University (England) under the Landscape Architecture graduation.



7th February - Presentation of the Project "Rivers" to sensitize for adoption of Ponsul River sections, by the schools of Idanha-a-Nova.

7th February – Presentation of the Project “Rivers” to sensitize for adoption of Ponsul River sections, by the schools of Idanha-a-Nova. The project “Rivers” is an environmental education project aimed to adopt and manage a river section in a way to sensitize society for the problems and the need for protection and valuing of fluvial ecosystems. It is focused on the social participation for the conservation of fluvial areas keeping with the aims of the United Nations Education Decade for Sustainable Development and contributes for implementing the Earth Charter and the Water Directive. Since 2006 is promoted in Portugal by the Portuguese Association of Environmental Education (ASPEA), Association of Geography Teachers (APG), League for Nature Protection (LPN) and the Faculty of Engineering of the University of Porto (FEUP). This session was developed for 39 students and 3 teachers from the 5th and 8th grades from the school of Idanha-a-Nova. Manuela Catana and other trainer were responsible for the session. Until the end of the school year two field excursions will be organized to two sections of Ponsul River by the two school classes. This project runs under the frame of the Eco-Schools Program and join the municipality of Idanha-a-Nova, Naturtejo Geopark and the schools of Idanha-a-Nova.



7th to 12th February- Portugal O'Meeting 2013 brings almost 2000 from all over the world. About 1600 amateurs and professional champions of orienteering met in one of the most important and international events for this sport, the second Portugal O'Meeting 2013. For several days people from many different countries competed in some of the best landscapes in Portugal. Many different generations (between 10 and 80 years old are competing) made the hotels and guest houses full in the region and tasted local gastronomy in many of our restaurants. The organization headquarters was Raiano Cultural Centre so all the participants got information about the Geopark and the geosites and other tourism attractions. Some of the geosites were also the main stage for the competition. The male winner was the French Thierry Gueorgiou, third in the world ranking, and the feminine winner was the Swiss Simone Niggli. Many people declared that will return for few days of vacations. Portugal is considered one of the favorite destinations for the world champions during the winter.



9th February to 31st March – Travelling exhibition “The time we went for ore”. The travelling exhibition about the mining memories of the region is now in Proença-a-Velha. The exhibition is right in the heart of this 230 inhabitant's village, at the social centre. The innovative idea is to bring the exhibition closer to locals to foster discussion. In this way this somewhat obscured period is revived by those who lived it and proudly tell the stories that help to build this moment of recent history. The exhibition opened during the main festivity of Proença-a-Velha, the Olive Oil Festival. Old miners were invited to share with many interested people, among them family, friends but also strangers coming from many different places, their life memories related with tin and wolfram collecting by digging and washing. With the presence of the Mayor of Idanha-a-Nova, the president of Proença-a-Velha and Armindo Jacinto Carlos Neto de Carvalho resumed the story of mining activity in the area and presented the documentary made together with Eddy Chambino and Joana Rodrigues based on interviews to 70 to 100 years old people. He also guided a visit together with Joana Rodrigues and an expert in local History to an illegal ore washing plant and to the village different heritage. Maria do Nascimento, 87 years old, took the pan and showed to the surprised participants how tin was found washing sediments in the local stream with an amazing skill worked all over the years.



9th to 10th February – Fair of Olive Oil and Sausages from Proença-a-Velha

9th to 10th February – Fair of Olive Oil and Sausages from Proença-a-Velha. The 11th Festival of Olive Oil and smoked sausages brought hundreds of enthusiasts to the small village of Proença-a-Velha with the support of Naturtejo Geopark. Many local producers sold their products and live cooking with well known chefs provided new ways for cooking with the tasty olive oil. A thematic visit to the heritages of Proença-a-Velha was conducted by Naturtejo Geopark and mountain bike brought almost one hundred to the tracks surrounding the village.

16th to 17th February – New Spanish tour operator in the region. The Spanish tour operator Alcer Travel brought a group of 38 clients for a weekend experiencing the Geopark. The guide from ActiGeo met it in Penha Garcia for a visit to the Ichnological Park, the historical villages of Idanha-a-Velha and Monsanto.



18th to 19th February – Two-day educational program. 85 students of the Quinta das Flores high school from Coimbra came for a two-day adventure in Naturtejo Geopark. In the first day they visited the Tejo Rock Art Interpretative Centre, for the geological and human settings, the fossil trees from Vila Velha de Ródão which testify climate changes in the past and visit Portas de Ródão Natural Monument through the boat trip. In the second day, despite the storm, the students walked by the Ichnological Park of Penha Garcia and visited the historical village of Monsanto. Manuela Catana guided the visit together with Joana Rodrigues and Isménia Araújo.

21st to 23rd February – Iberian seminar on Desertification. The Agriculture School of Castelo Branco hosted the second seminar on “Land Management role against Desertification” with experts from both Portugal and Spain. Armindo Jacinto was invited to present the example of Naturtejo Geopark as a project for rural sustainable development.



21st to 22nd February – Participation in the National Congress of Geomorphology.

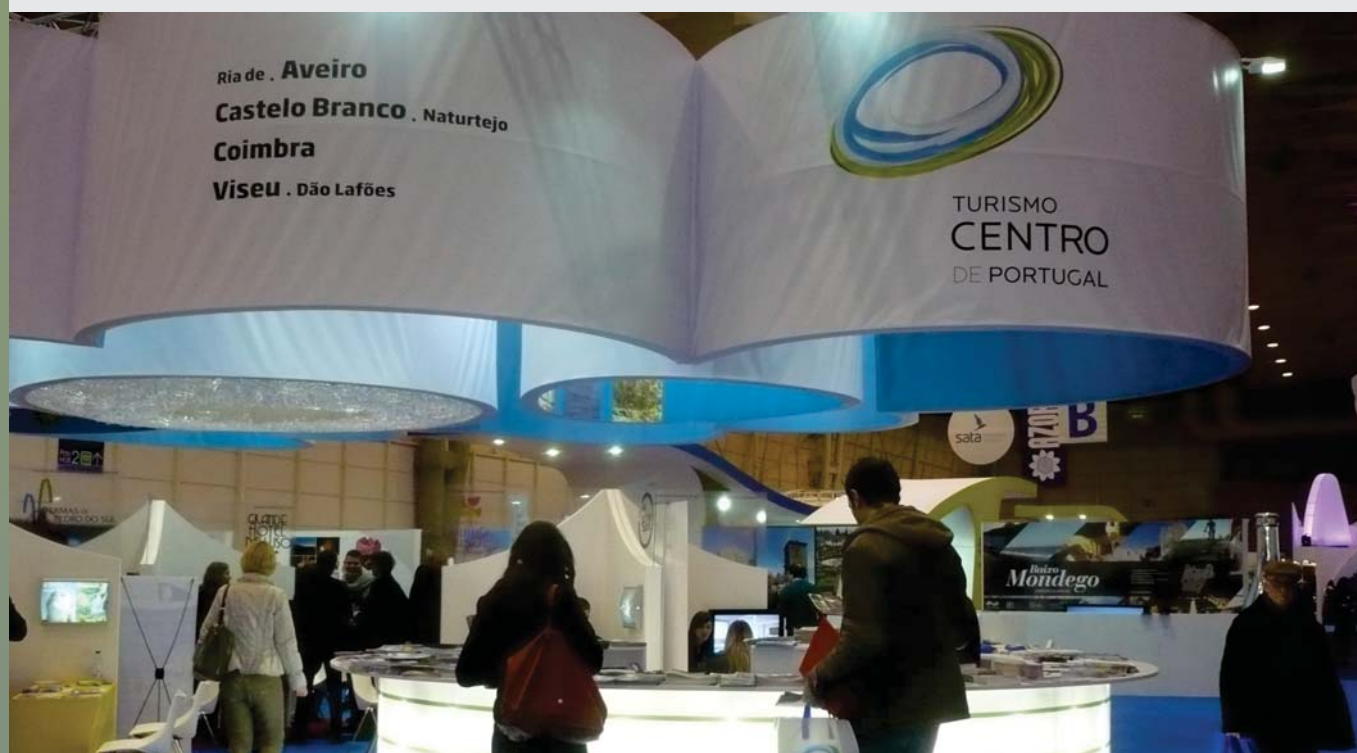
University of Coimbra hosted the VI National Congress of Geomorphology under the main subject “Geomorphology: new and old challenges”. Joana Rodrigues represented Naturtejo Geopark with the presentation of the work “Granite morphologies from Naturtejo Geopark: Pedestal Rocks”, which was integrated in the section Geomorphological Resources.

[www.naturtejo.com/ficheiros/conteudos/files/poster\(1\).pdf](http://www.naturtejo.com/ficheiros/conteudos/files/poster(1).pdf)

22nd February – Nature Conservation educational program. This educational program was developed for 102 students from the 10th grade studying Environmental Management together with 5 teachers from Pombal High School. They visited Monte Barata environmental farm from Quercus Environmental NGO with the help of Manuela Catana and Alice Marcelo.



26th February – Adoption of a river by local school. The first field excursion under the project “Rivers” for students from the 5th grade was organized by the invited monitor Arlindo Cardoso together with Manuela Catana and a technician from Idanha-a-Nova municipality. The class adopted 500 m section of Ponsul River right in the Ichnological Park of Penha Garcia. The 18 students and 2 teachers made a general analysis of the selected area, and visited the watermills and the fossils storehouse.



27th February to 3rd March – Naturtejo Geopark and partners at Lisbon International Tourism Fair.

Naturtejo Geopark was once more present in the most important Tourism Trade Show in Portugal. This time in two booths, one independent and one representing the Intermunicipal Community of Beira Interior Sul, both integrated in the stand of Center of Portugal Tourism Region, the invited destination for 2013's Trade Show. This year the Geopark had a privileged space for presentation and business with companies and operators, as well as for partner and geopark's promotion among public. Some municipalities belonging to the Geopark were also promoted in other stands, such as Nisa which was in the Alentejo stand or Oleiros and Proença-a-Nova that were represented by the Pinhal Maior stand, as well as some private partners from Naturtejo that developed their own stands.

The Schist Village Program, which includes 4 traditional villages from Naturtejo Geopark (Álvaro, Figueira, Martim Branco and Sarzedas) presented the "Schist Vilages Guidebook" where the Geopark is well presented with many tourism information, besides some geomonuments, guest house and restaurant partners. In the Centre Tourism Region stand the new projects for the Historical Villages of Portugal "paths to the future" were presented, including the geopark villages of Monsanto and Idanha-a-Velha.

The Mines and Geological Interest Sites of Portugal online platform, promoted by the Directorate General of Energy and Geology and the Mining Development Company, was also presented in the Centre of Portugal stand, as Naturtejo Geopark is a partner. The promotion of this initiative was made during the Trade Show's days by two young "miners" that distributed flyers, information and friendship to the interested public. Armindo Jacinto presented Naturtejo Tour packages 2013: Nature and Adventure, Heritage, Well-Being and Culture, Birdwatching and Euroace Tourism Packages (Centre-Alentejo-Extremadura). Also the new Naturtejo Geopark tourism map was launched.

The Intermunicipal Community Beira Interior Sul promoted a Live Cooking with local products from the territory, presented also the Easter traditions in Beira Baixa with live exhibition made by local people, oriented tasting of olive oil by the Agriculture School of Castelo Branco and by the Association of Olive Oil Producers from Beira Interior and cheeses from the Cooperative of Cheese Producers of Beira Baixa. In the International Year of Water Cooperation the theme of the program of the Tourism Center of Portugal stand was "Water with Sense(s)".

28th February – Conference Castelo Branco and the Templars. The subject of the Templar history in the territory is still hot. A new conference on the subject was organized in Castelo Branco, at the Castle Church, with the presence of the Mayor Joaquim Morão and several institutions, such as ADRACES, Progestur, USALBI, Naturtejo by its president Armindo Jacinto, and the Templar Order in Portugal. This time it was discussed the presence of the Templars in the city. An homage was made to the lately poet José Manuel Capelo and music performed with Beiroa guitar was much appreciated.

29th February - Ignite meeting discusses rural world. The Ignite Meeting follows the American model where people come to talk on a subject for five minutes. These meetings attract a lot of people and many good ideas. The 18th Ignite Portugal was organized in Castelo Branco under the subject "rural world". 30 entrepreneurs discussed new ideas for business and local development among them Armindo Jacinto



IMPACT OF GEOPARK IN MEDIA

Newspapers & www

February (Ensino Magazine) – In Futurália and Qualific@ Naturtejo and Magazine raffle weekends

7th February (Reconquista) – 11th Olive Oil and Sausages Festival

7th February (Reconquista) – Rural world in exhibition

12th February (Povo da Beira) – The time we went for ore

12th February (Povo da Beira) – Rural world in exhibition

12th February (Povo da Beira) – Olive oil and sausage come again to attract visitors to the village

13th February (Gazeta do Interior) – The time we went for ore

13th February (Gazeta do Interior) – Portugal O'Meeting at Idanha-a-Nova

14th February (Reconquista) – The time we went for ore

14th February (Reconquista) – Orienting Champions stronger at Idanha

15th February (www.jeepclubportugal.pt) – By the Geopark tracks

20th February (Gazeta do Interior) – Proença-a-Velha enjoy the Olive Oil and Sausage Festival

21st February (Reconquista) – Castelo Branco Templar city

27th February (www.terralentejana.blogspot.com) – Naturtejo Geopark and National Commission for UNESCO launches school contest “The Water that unite us”

27th February (Gazeta do Interior) – Idanha-a-Nova live again the Easter Mysteries

28th February (Reconquista) – There's Easter Mysteries

28th February (Reconquista) – Ignite discusses interior and rural world

SCIENTIFIC CONTRIBUTIONS FOR THE GEO PARK AND THE GEOSCIENCES



- Rodrigues, J. & Neto de Carvalho, C. 2013. Geoformas graníticas do Geopark Naturtejo: Blocos Pedunculados. In: Atas VI Congresso Nacional de Geomorfologia, 21 a 23 de Fevereiro de 2013. Universidade de Coimbra, 223-227

http://www.naturtejo.com/ficheiros/conteudos/files/Rodrigues&Neto%20de%20Carvalho_2013.pdf | [http://www.naturtejo.com/ficheiros/conteudos/files/poster\(1\).pdf](http://www.naturtejo.com/ficheiros/conteudos/files/poster(1).pdf)



PROMOTION FOR THE GENERAL PUBLIC

- Brochure "Tourism programs between Portugal and Spain – three regions, two countries" in Portuguese language
- 2nd edition of the Map "the Oleiros Mountains Route" in Portuguese Language
- Schist Villages – the discover starts here. Foge Comigo! Destination guidebooks (502 pp.) (in Portuguese language)
- Booklet "4 senses – natural experiences in Centro de Portugal", 56 pp. (in Portuguese, English, Spanish and German Languages)
- Naturtejo Geopark "tourism programs 2013 – Adventure, Heritage, Birdwatching and Well-Being and Culture" (in Portuguese and English languages)
- Flyer "Monte Filipe Hotel & Spa" (in Portuguese Language)

ITB Berlin - Hall 4.1.b
Celebrating

10
YEARS

Adventure Tourism
2004 - 2013

THE WORLD'S
LEADING TRAVEL
TRADE SHOW®

O Centro Ciência Viva da Floresta tem a honra de convidar V. Ex^ª para a inauguração da exposição Evolução da Floresta em Portugal, no próximo dia 3 de abril às 15h00, no Centro Ciência Viva da Floresta.

Orientação científica Professor Doutor João Pais
Departamento de Ciências da Terra, FCT

Agradecemos a confirmação da sua presença: 274 670 220 ou info@floresta.ciencioviva.pt





PROMOTION FOR THE GENERAL PUBLIC

IAMG 2013 Mathematics Planet Earth 2013 **ANNOUNCEMENT**

15th ANNUAL CONFERENCE OF THE INTERNATIONAL ASSOCIATION FOR MATHEMATICAL GEOSCIENCES

Frontiers of Mathematical Geosciences: New approaches to understand the natural World

Madrid (Spain) 2-6 September 2013

Background

Since the International Association for Mathematical Geosciences (IAMG) was founded in 1988 in Fagüe, its mission has been to promote international co-operation and the use of mathematics in geosciences research and in technology. The IAMG Annual Conference provides an excellent environment to show the last advances in geomathematics and a great opportunity to make contacts and gather new ideas. Furthermore, the IAMG Madrid 2013 Conference is an event of the Mathematics of Planet Earth 2013 (www.mpe2013.org); another reason to be in Madrid from the 2nd to the 6th of September 2013.

Sessions

Advances in classical statistics relevant to the Geosciences - Frontier Geostatistics - Compositional Data Analysis Applied to Geochemistry - Data assimilation in Geosciences Machine learning in Geoscience applications - Spatiotemporal analysis: structural complexity and extreme behaviour - Parameterization of soil systems at different scales - Fractals, Chaos and Complexity in the Earth System - Remote Sensing a Changing World - Modern sensor data (and their processing) in Engineering Geology - Geographic Information Systems/Geoinformatics - Quantitative methods in Geomorphology and Land Surface Processes - Deformation modeling, Geodynamics and natural hazards - Hydrogeology: From process understanding to improved predictions - Quantitative hydrology: working across scientific disciplines and time-space scales - Quantitative Environmental Geology - Modeling of energy resources - New Developments in Oil and Gas Discovery Modeling - Open Session on Mathematics of Oil Recovery - Geostatistical priors in inversion of geophysical and engineering data - Mineral and energy resources for planet Earth: evaluation, extraction and optimal management - Mathematical Petrophysics: Theory and Applications - Recent advances in Quantitative Methods applied to Stratigraphy and Paleontology - Mathematical Geosciences and Planetary Geology - Mathematics of Planet Earth

Important Dates

January 1, 2013:	Abstract submission starts/Reduced registration fee starts
February 1, 2013:	Abstract submission ends
March 1, 2013:	Notification of abstract acceptance/Extended abstract submission starts
April 1, 2013:	Extended abstract submission ends
May 1, 2013:	Revised extended abstracts returned to authors
May 15, 2013:	Early registration ends
May 20, 2013:	Submission of final versions of extended abstracts ends
September 2-6, 2013:	IAMG Madrid 2013

For more information visit <http://www.igme.es/internet/iamg2013/>

Well for groundwater research, 1000 meters deep, Alcalá de Henares, Madrid (Spain), 1927-1928. Detail of stained glass in the Instituto Geológico y Minero

ENCONTRO INTERNACIONAL DA CASA DAS CIÊNCIAS

A UTILIZAÇÃO DE RECURSOS DIGITAIS EM CONTEXTO DE APRENDIZAGEM

www.dadciencias.org

ESCOLA SECUNDÁRIA 1000 PROFESSORES

21 + 22 MARÇO 2013

LEBON ESCOLA SECUNDÁRIA D. DINIS

ACAFA Nº 5 (2012) On-line

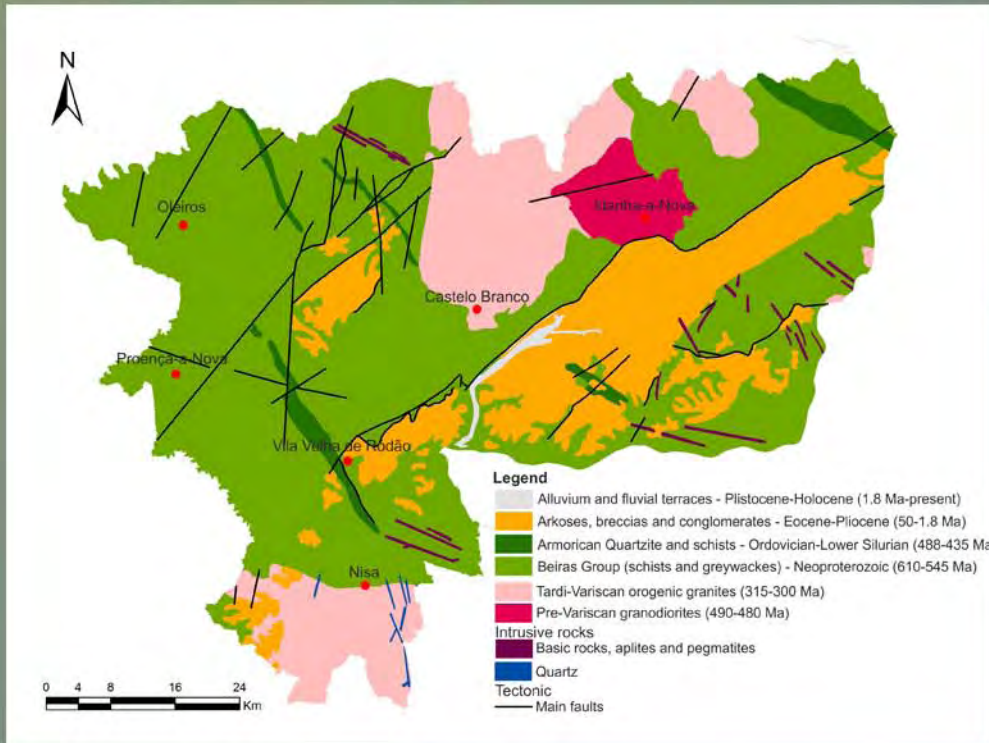
Município Proença+Nova

CONVITE

Por ocasião das celebrações do Dia Mundial da Terra e do Dia Nacional do Património Geológico (22 de Abril), o coordenador da Associação de Estudos do Alto Tejo e o Presidente da Câmara Municipal de Proença-a-Nova têm a honra de convidar V. Exa a assistir à apresentação do número 5 da revista digital Açafa On-line.

Esta edição inclui um dossier temático dedicado às Guerras Peninsulares e às estruturas militares da chamada Linha Defensiva das Talhadas-Moradal, que têm beneficiado de ações de estudo e valorização no concelho de Proença-a-Nova, um conjunto muito significativo de textos sobre património geológico, elaborados por técnicos ou colaboradores do Geopark Naturtejo, e outros textos, sobre investigação arqueológica, dialetologia, arquitectura vernacular, economia rural, um contributo para demografia histórica e registos fonográficos de poesia popular. Estes documentos estarão disponíveis para descarga, a partir da data de apresentação, na página www.altotejo.org

A sessão terá lugar na Cafeteria/Galeria Municipal do Parque Urbano, em Proença-a-Nova, no dia 21 de Abril de 2013 (domingo), com início pelas 14h30.



CRUZIANA

www.geoparknaturtejo.com